

CORPORATE SOLUTIONS 4.50.

Installation guide for AdminSecure 4.50

CONTENTS

1. Introduction	1
1.1. Purpose	1
2. Product installation dependencies.....	1
2.1. AdminSecure 4.05	1
2.2. Simple installation	1
2.3. Disabling the operating system's UAC feature	1
3. ANNEX 1: How to install SQL Server Express 2005	2
4. ANNEX 2: How to disable UAC in Windows 2008 and later	6

1. INTRODUCTION

1.1. Purpose

This document explains how to install AdminSecure 4.50 on any operating system compatible with it, especially on W2008 R2 and Windows 7.

We would advise you to use this guide as a complement to the product installation guide. Should you encounter any problems, please contact the Panda Security Support department.

2. PRODUCT INSTALLATION DEPENDENCIES

2.1. AdminSecure 4.05

As AdminSecure 4.50 is only delivered with an upgrade wizard and not a full installer, you must have a previous version of AdminSecure installed to upgrade it and install version 4.50.

If you want to install it on W2008 or later, we recommend that you first install version 4.05, following the steps indicated in section *2.2. Simple installation*.

Once installed, run the AdminSecure 4.50 upgrade wizard to enjoy all of its features.

2.2. Simple installation

AdminSecure allows a simple installation of the product, which by default installs the MSDE database on the computer. MSDE is not compatible with Windows 2008 and later, and so the **Simple installation** option is not enabled, therefore the only option is to use **Custom installation**, which means that there must be a database previously installed.

If this is not the case, then the product cannot be installed.

To resolve this problem requires installing an SQL Server 2005 Express database prior to the installation of AdminSecure. Annex 1 of this document explains in detail how to do this.

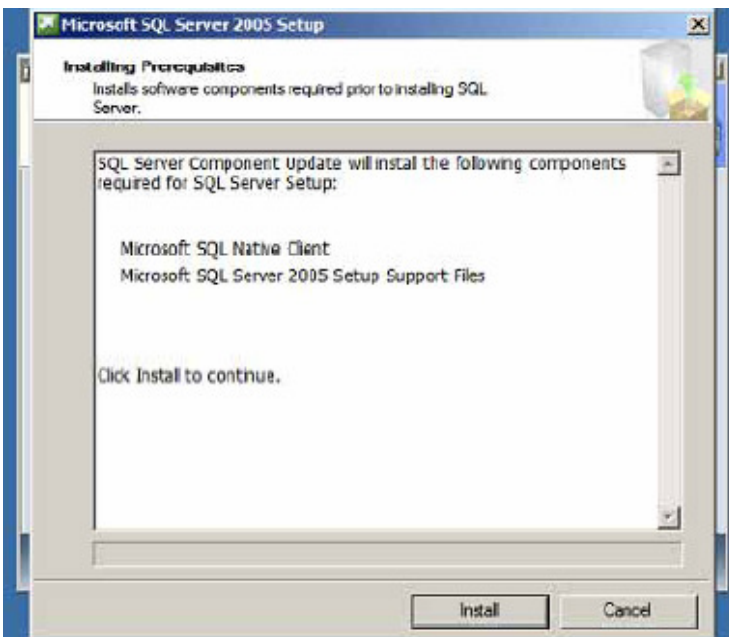
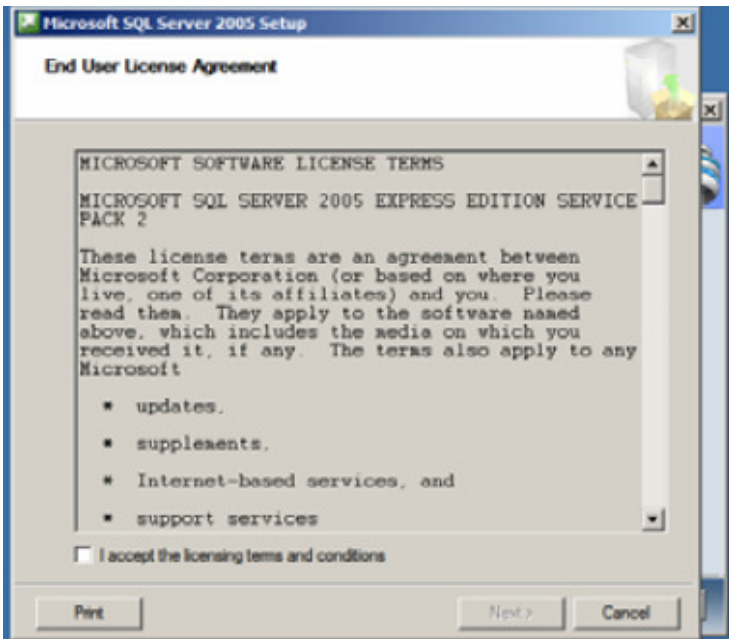
2.3. Disabling the operating system's UAC feature

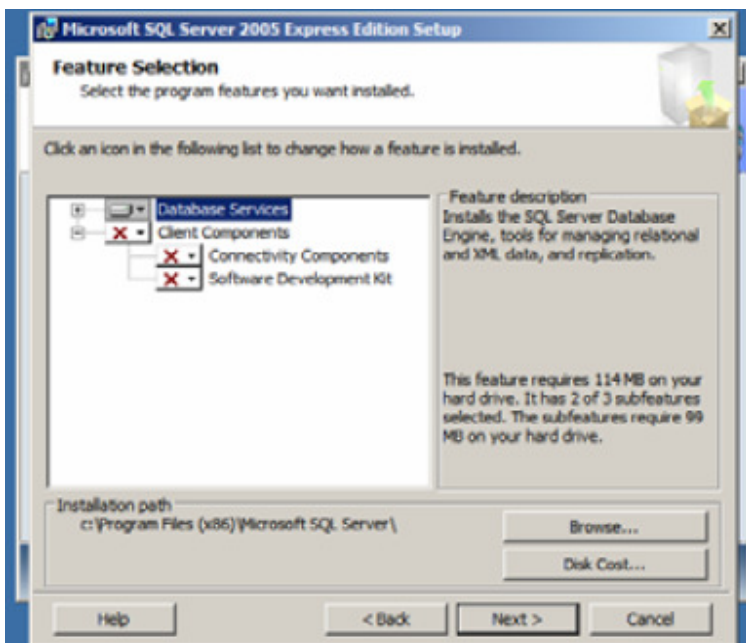
Even though this is not always necessary, we recommend that you disable UAC on Windows 2008 R2 and Windows 7 when installing AdminSecure. Annex 2 of this document explains in detail how to do this.

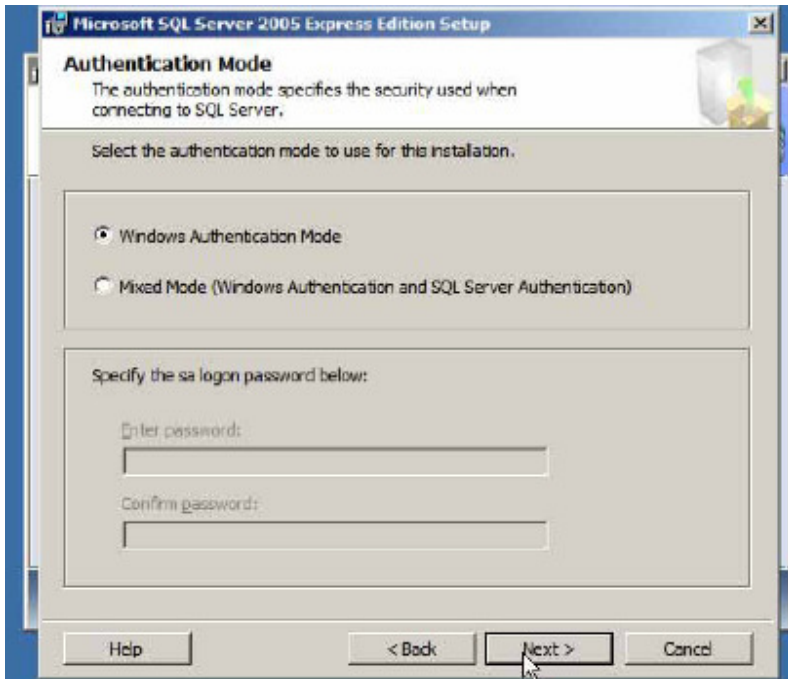
3. ANNEX 1: HOW TO INSTALL SQL SERVER EXPRESS 2005

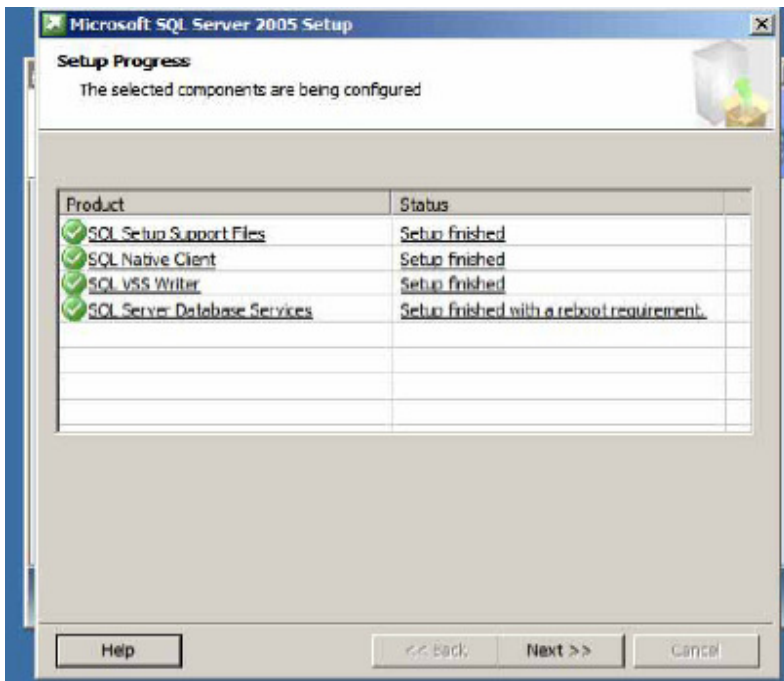
You can download it from the Microsoft website. In some cases you will also have to install .NET Framework 2.0.

Follow the instructions in the installation wizard, as illustrated below:









4. ANNEX 2: HOW TO DISABLE UAC IN WINDOWS 2008 AND LATER

Open the **Control Panel** and select **User accounts**. Don't restart the server at that moment. Follow the instructions as indicated in the following screens:

