

CORPORATE SOLUTIONS 4.50.

RELEASE NOTES

CONTENTS

| | |
|---|-----------|
| 1. Centralized Administration: AdminSecure | 2 |
| 1.1. Compatibility features | 2 |
| 1.1.1. Compatibility with Windows 7 and Windows 2008 R2 | 2 |
| 1.1.2. End of compatibility with Windows 2000 (up to and including SP 3) | 2 |
| 1.2. New features of the version | 2 |
| 1.2.1. Installing the agent on multiple computers | 2 |
| 1.2.2. Repairing the agent on multiple computers | 4 |
| 1.2.3. Uninstalling the agent from multiple computers | 6 |
| 1.2.4. Controlling computer restarts after installing the protection | 6 |
| 1.2.5. Configuring the Internet connection for the EndPoint protection | 8 |
| 1.2.6. Configuring the protection uninstall password | 10 |
| 1.2.7. Collection and sending of technical information for troubleshooting purposes | 11 |
| 1.3. Other improvements | 13 |
| 1.3.1. Changes to the properties of managed computers | 13 |
| 1.3.2. New uninstallers | 15 |
| 1.4. Features eliminated from the previous version | 16 |
| 1.4.1. Elimination of obsolete platforms | 16 |
| 1.4.2. Elimination of the distribution across Novell networks | 16 |
| 1.4.3. Elimination of the communication channel with clients from the console | 17 |
| 1.4.4. Elimination of the option to scan floppy disk drives | 19 |
| 1.4.5. Elimination of the AdminSecure SDK | 20 |
| 1.5. Bugs corrected | 21 |
| 2. Panda For Desktops (2000/XP/Vista/Win7) | 22 |
| 2.1. New features of the version | 22 |
| 2.1.1. Password-protected uninstall of the protection | 22 |

- 2.1.2. Elimination of the anti-spam buttons in Outlook.....23
- 2.2. Bugs corrected 23**
- 3. Panda For FileServers (2000/2003/2008/2008 R2) 24**
- 3.1. Bugs corrected 24**
- 4. Panda For Exchange Servers (2000/2003)..... 24**
- 4.1. Bugs corrected 24**
- 5. Panda For Exchange Servers (2010)..... 24**
- 5.1. New features of the version..... 24**
 - 5.1.1. Compatibility with Exchange 2010 SP124
- 6. ANNEX I: Versions table..... 24**
- 6.1. Panda for Business 4.50.00..... 24**
- 6.2. Panda for Business with Exchange 4.50.00 25**
- 6.3. Panda for Enterprise 4.50.00 25**

1. CENTRALIZED ADMINISTRATION: ADMINSECURE

1.1. Compatibility features

1.1.1. Compatibility with Windows 7 and Windows 2008 R2

AdminSecure 4.50 is fully compatible with Windows 7 and Windows 2008 R2. Therefore, both the Console, the AdminServer and the Distribution Server work properly on those operating systems.

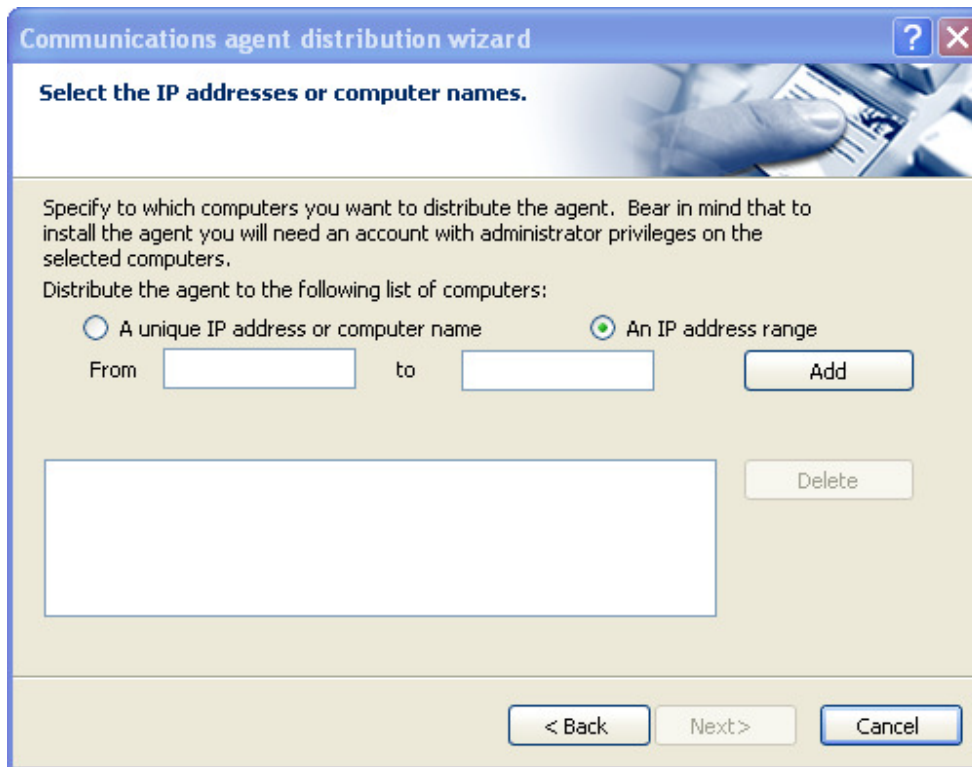
1.1.2. End of compatibility with Windows 2000 (up to and including SP 3)

From AdminSecure 4.50, the Console, the AdminServer and the Distribution Server are only compatible with operating systems later than Windows 2000 SP3.

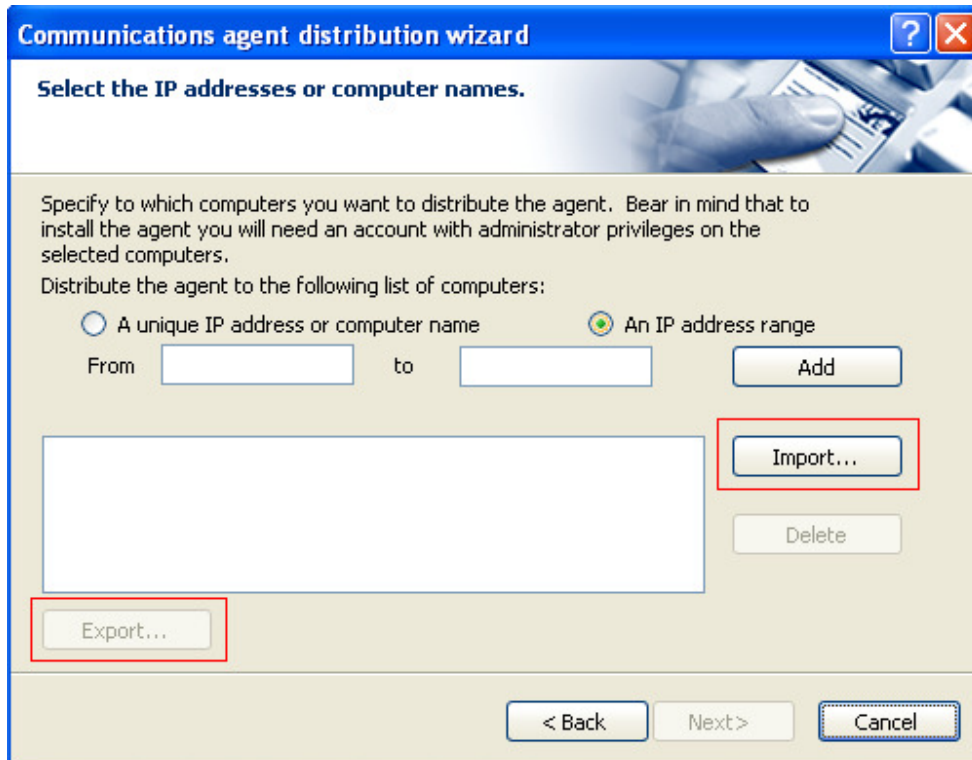
1.2. New features of the version

1.2.1. Installing the agent on multiple computers

AdminSecure lets you install an agent on several computers by entering in the console the names, IP addresses or IP address range of the relevant machines. If you want to install the agent on a series of computers not within a range of IP addresses, you must enter them manually one by one or using very specific ranges. If, for any reason, the process fails on one or all of the computers, the entered list will be lost. If you had to carry out the same operation on the same computers again, you would need to enter them again.

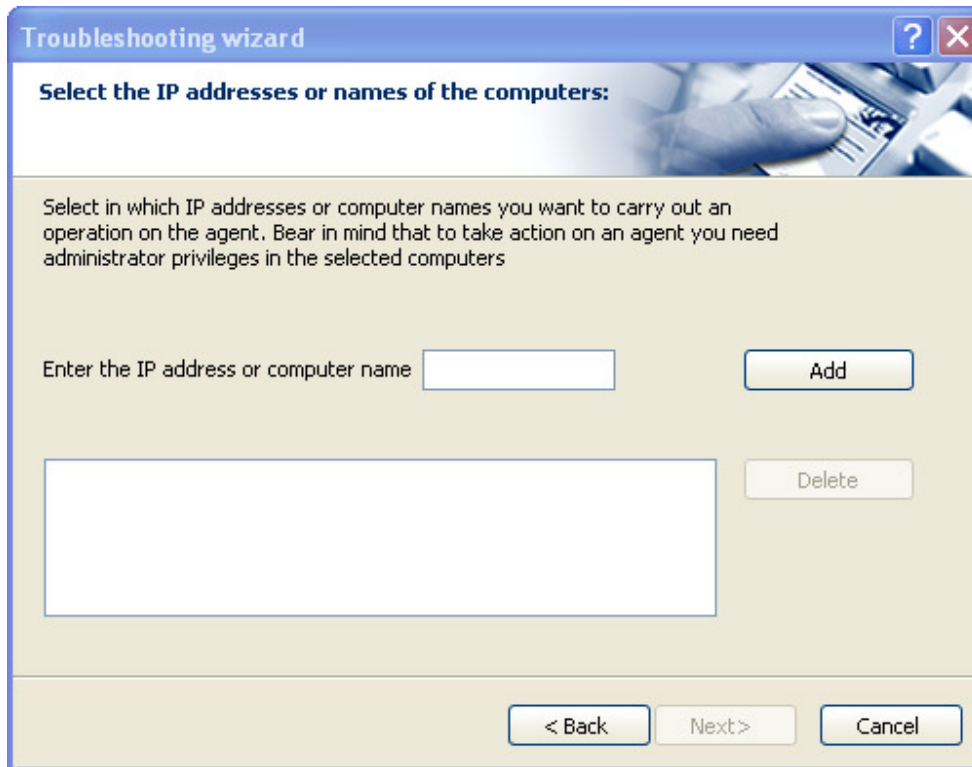


AdminSecure 4.50 incorporates an improvement to this feature as it lets you import a text file including the list of computers (IP address or name) that you want to install the agent on. Similarly, you can now export a text file with the list of computers whose agent has been installed in order to save the changes made:

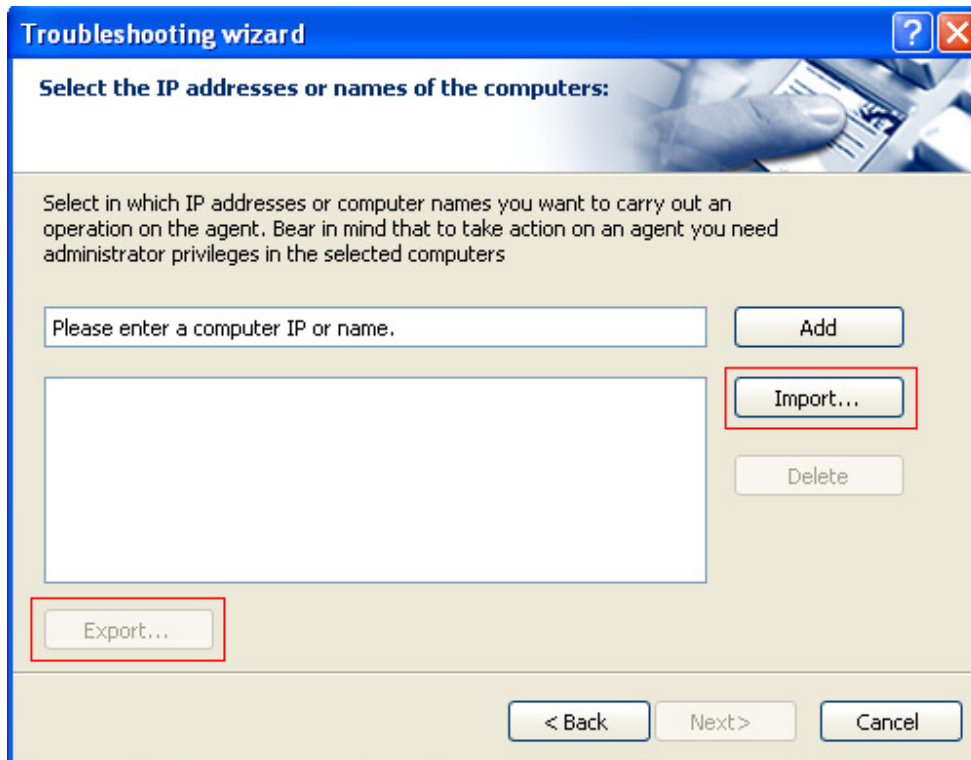


1.2.2. Repairing the agent on multiple computers

AdminSecure lets you repair an agent’s faulty installation by entering in the console the name, IP address or IP address range of the computers where it was installed. If you want to carry out this operation on several computers, you must manually enter the name or IP address of each and every one of them. If, for any reason, the process fails on one or all of the computers, the entered list will be lost. If you need to restore the agents on the same computers again, you will need to re-enter the list.



AdminSecure 4.50 incorporates an improvement to this feature as it lets you import a text file including the list of computers (IP address or name) whose agent you want to repair. Similarly, you can now export a text file with the list of computers whose agent has been restored in order to save the changes made:



1.2.3. Uninstalling the agent from multiple computers

The user interface that lets you uninstall a computer’s agent has the same limitations as those already mentioned for the agent repair process.

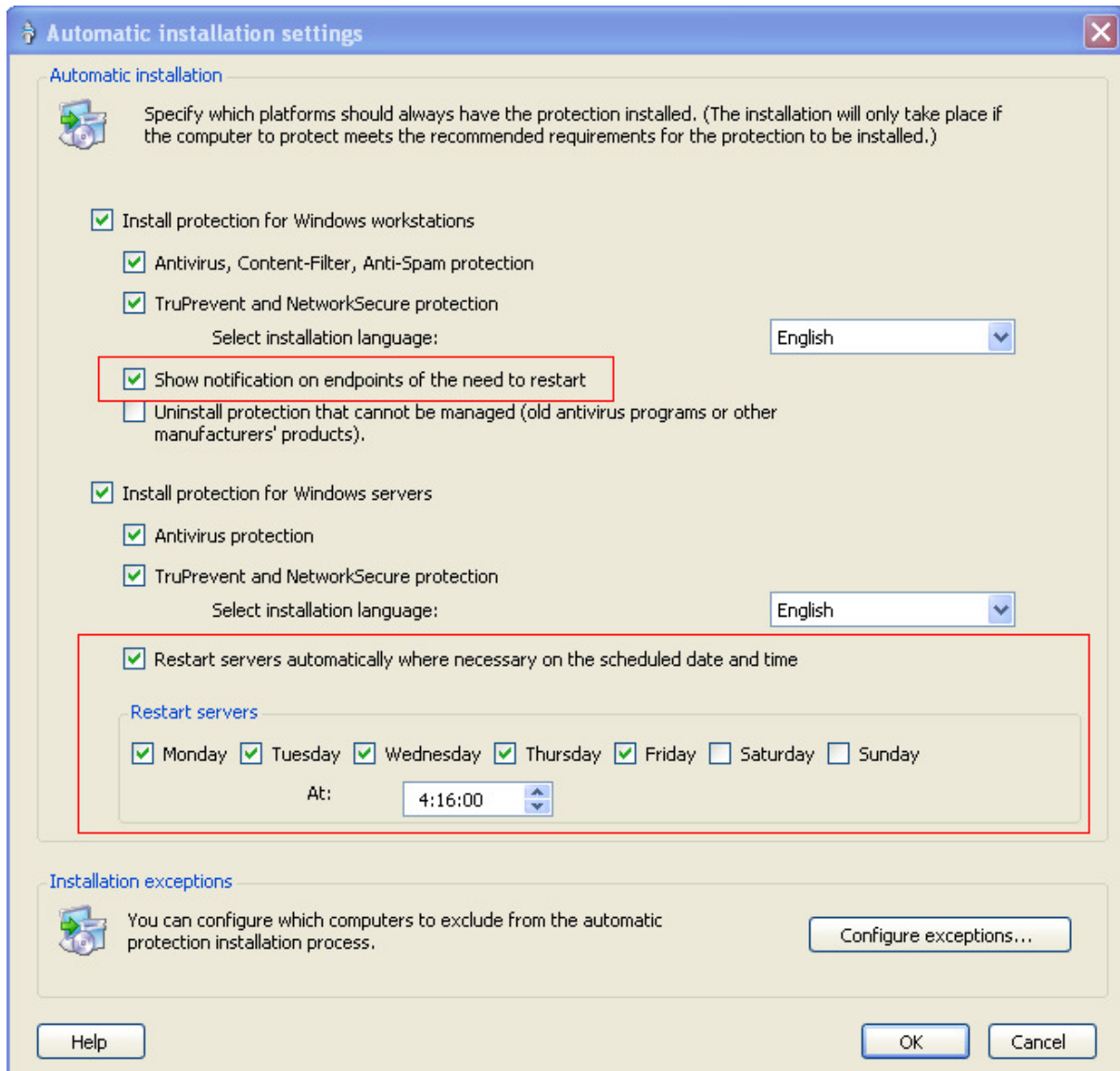
AdminSecure 4.50 incorporates an improvement to make it easier to import and export the lists of computers whose agent must be uninstalled.

1.2.4. Controlling computer restarts after installing the protection

AdminSecure 4.50 incorporates a new feature to let administrators control when computers and Windows servers will restart after installing the protection.

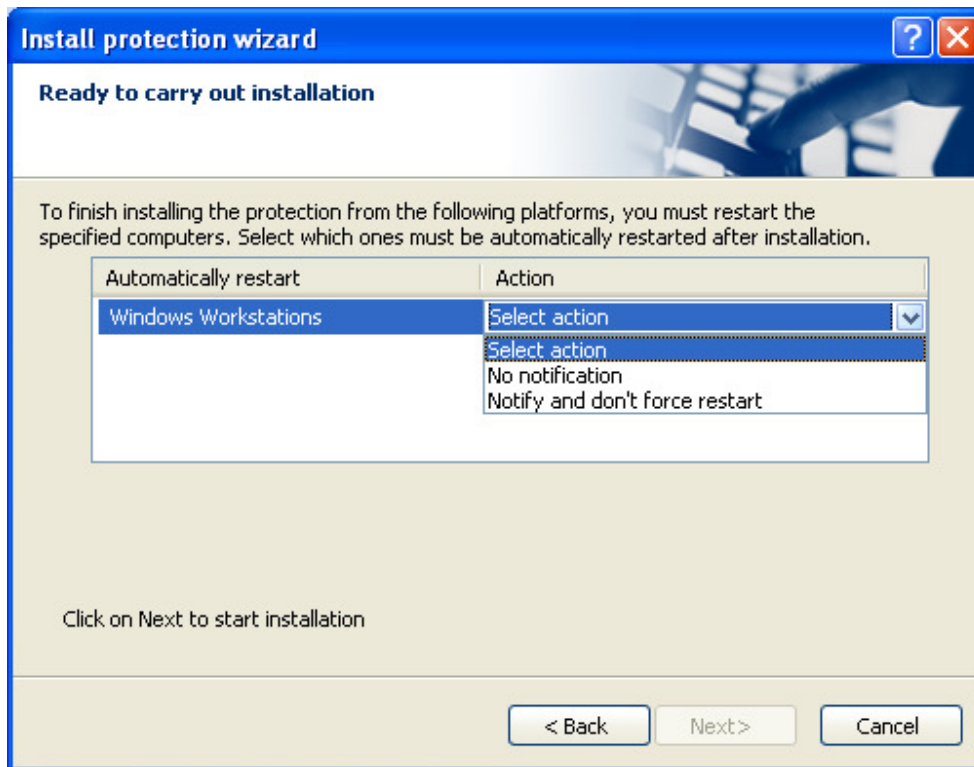
Automatic installation

In the case of automatic installations of the EndPoint protection, the administrator can configure servers to restart at a particular time on a specific day after installing the protection or let users decide whether they want to postpone restarting the computer:



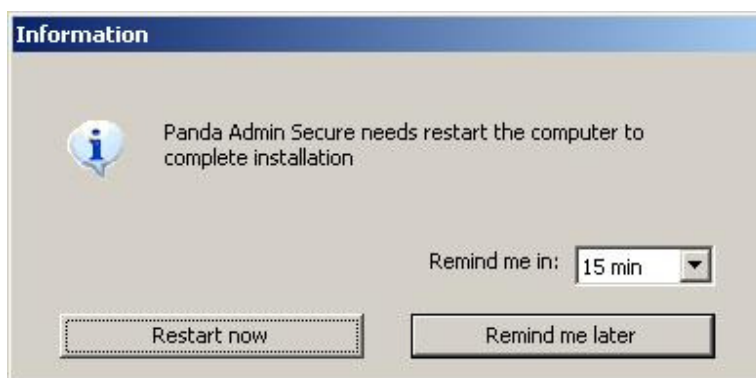
Manual installation

In the case of manual installations of the protection for Windows workstations, the administrator can choose between restarting the computers automatically after installation, or allowing the user to postpone it.



Restart postponed by the user

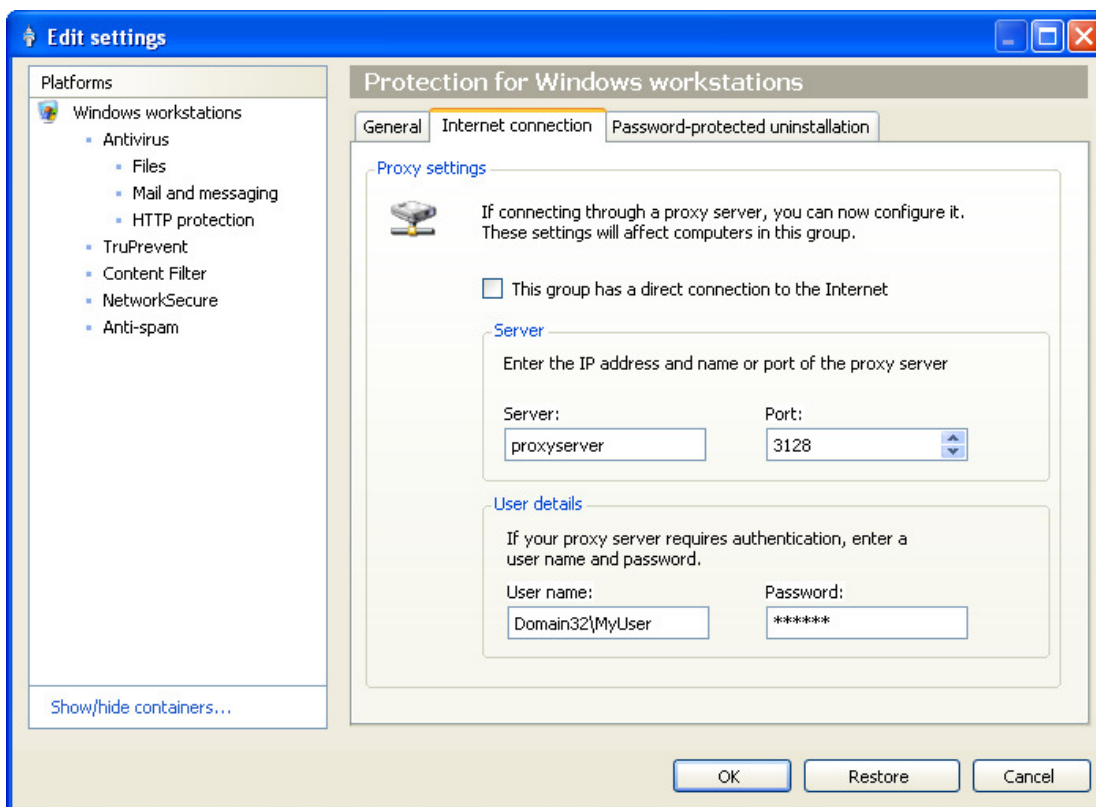
If the administrator chooses to let users decide whether they want to restart their Windows workstations immediately or later, the following message is displayed after installation:



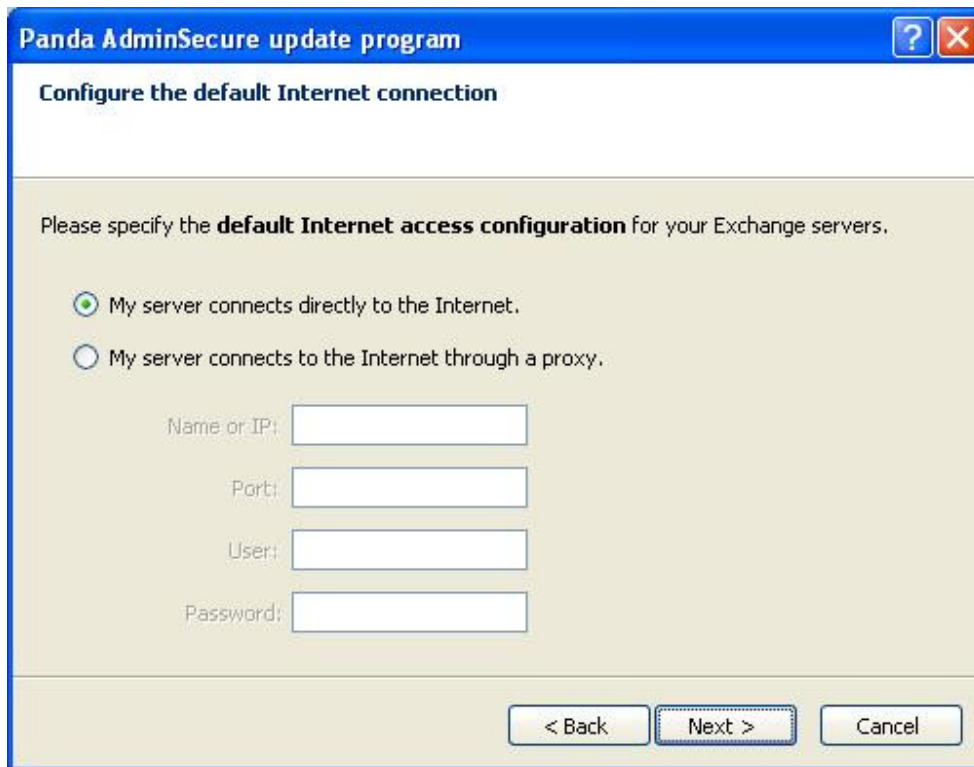
1.2.5. Configuring the Internet connection for the EndPoint protection

From version 4.07 of Panda for Business, both Panda for Desktops and Panda for File Servers require an Internet connection to access Collective Intelligence and enjoy maximum detection power. In both solutions, if there was no Internet connection, it could be established through the pop-up message displayed by the program for that purpose.

AdminSecure 4.50 makes it easier to configure the Internet connection of computers through the Console:



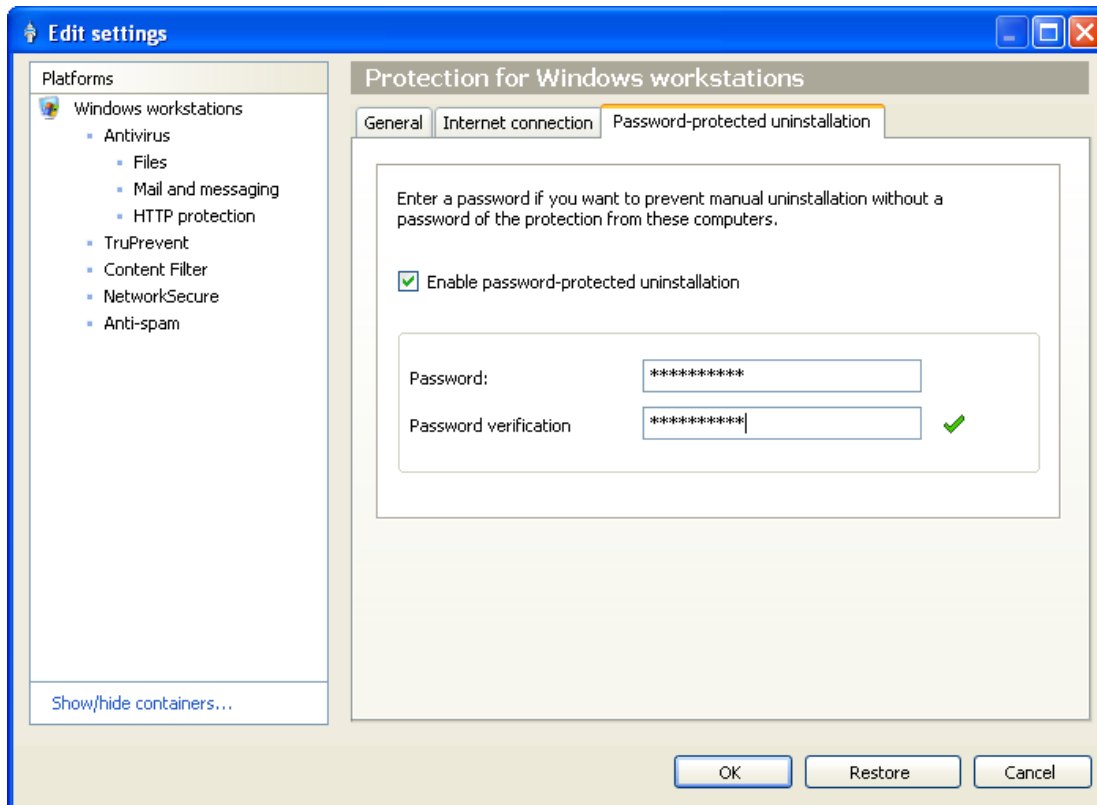
The upgrade wizard also incorporates some changes with the same objective:



1.2.6. Configuring the protection uninstall password

End users can easily uninstall the protection through the Add or Remove Programs option in the Windows Control Panel provided they have administrator rights.

In order to avoid unwanted uninstalls, AdminSecure 4.50 lets administrators configure an uninstall password and associate it to the protection installed on a Windows workstation (Panda for Desktops):

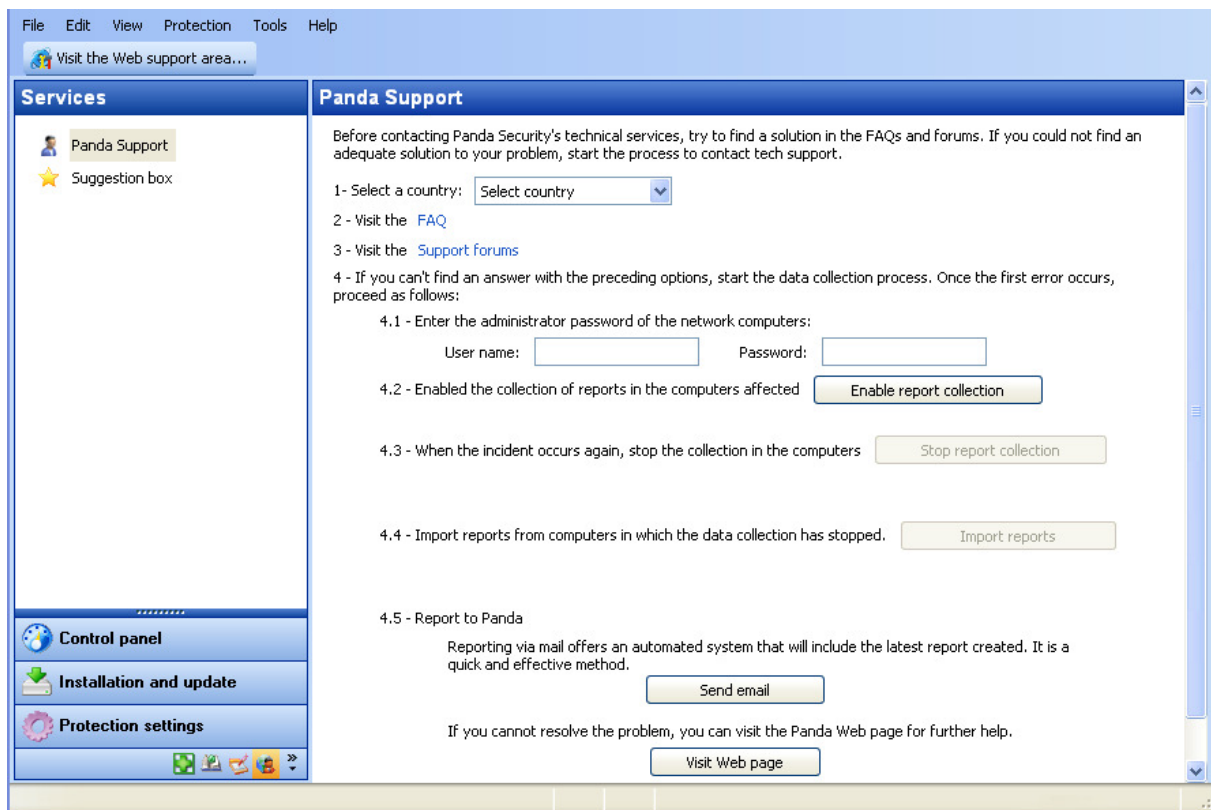


Once configured, if the end user tries to uninstall the protection, they must enter the right password (for more details, refer to section *2.1.1 Password-protected uninstall of the protection* in this document).

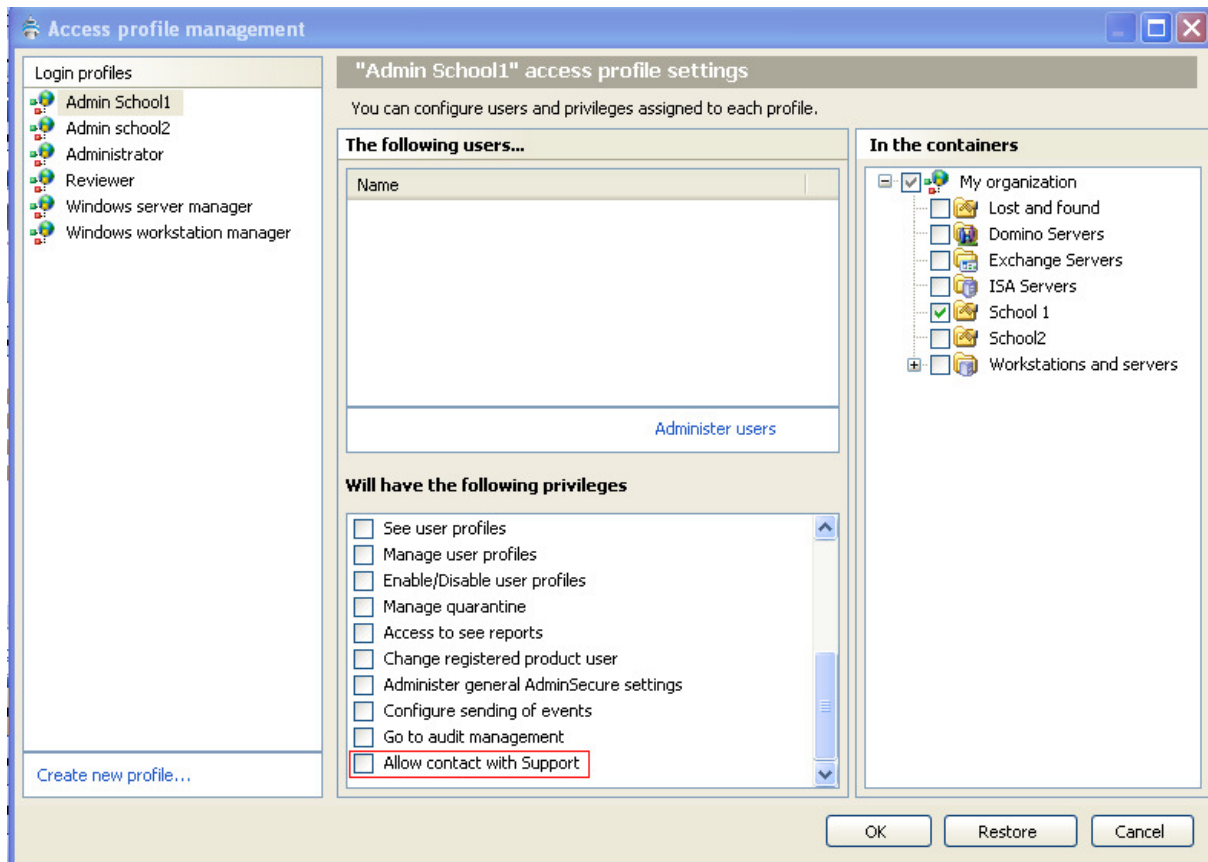
1.2.7. Collection and sending of technical information for troubleshooting purposes

AdminSecure 4.50 incorporates a new feature to help users collect and send log files generated by AdminSecure for troubleshooting purposes. The aim of this feature is to help Panda's Tech Support Dept. resolve problems with AdminSecure.

This new feature consists of a wizard that guides the user through the file collection process and emails all required information to Panda.



You need to have activated the product to be able to use this feature. Additionally, if the profile management option is enabled, you must have the right to contact Tech Support:



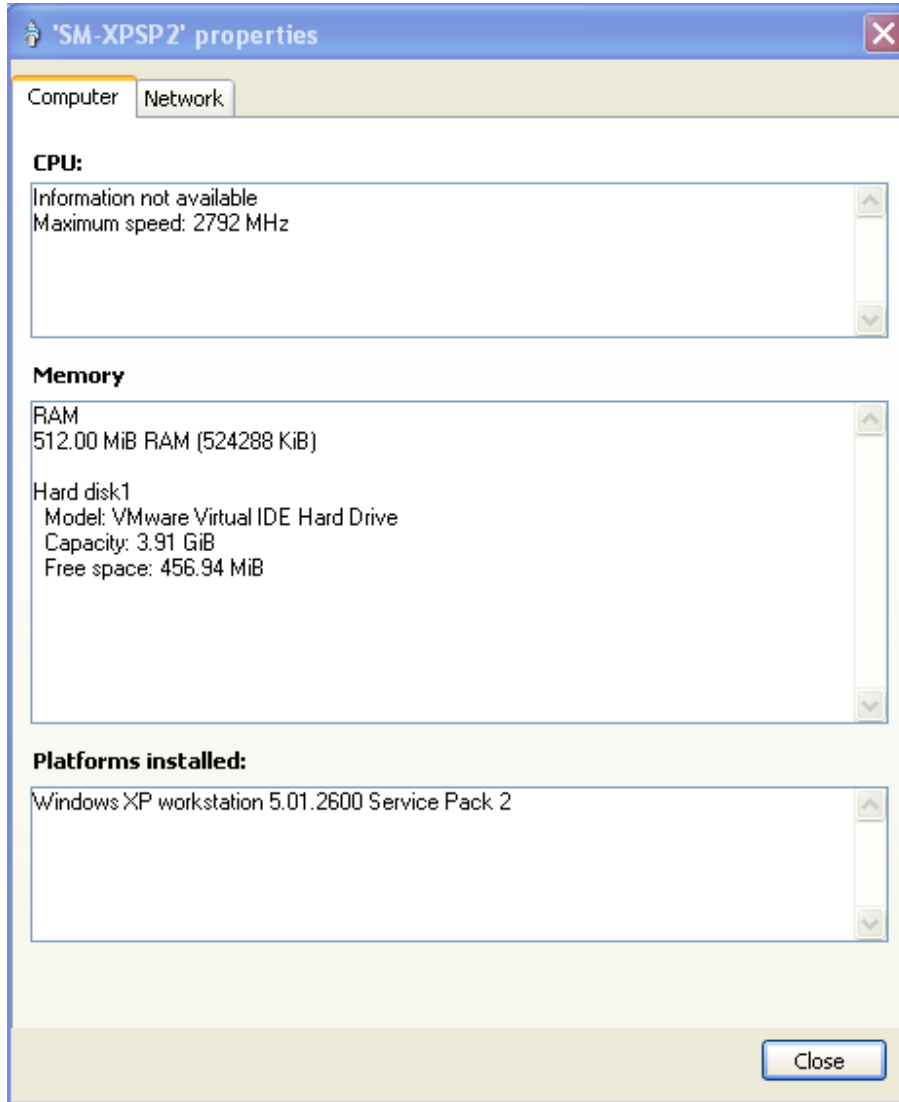
1.3. Other improvements

1.3.1. Changes to the properties of managed computers

The AdminSecure 4.50 Console only displays the following information about managed computers:

- Operating system installed (full name, version and Service Pack if any)
- RAM (size)
- Processor (model and maximum speed)
- Hard disk (model, capacity, percentage of free space)
- For each network card on the computer:
 - IP address

- MAC address



1.3.2. New uninstallers

AdminSecure 4.50 incorporates uninstallers for the following antivirus products:

| Antivirus Program |
|---|
| Panda Antivirus Pro 2010 and 2011 |
| Panda Internet Security 2010 and 2011 |
| Panda Global Protection 2010 and 2011 |
| Panda MOP 5.04, 5.04.50 and 5.05 |
| Panda Cloud Antivirus 1.0, 2.0 and 3.0 |
| McAfee Viruscan Enterprise 8.7, 8.7i |
| Sophos Endpoint Security and Control 8.0 and 9.0 |
| Sophos Anti-virus 7.6 and 9.5 |
| Trend Micro Officescan client server suite 10 |
| F-Secure AV for Workstations 9.00 |
| F-Secure Antivirus 2010 |
| Kaspersky Anti-Virus 2010 |
| Kaspersky Internet Security 7.0 |
| AVG Anti-virus 8.5 and 9.0 |
| Microsoft Essentials 1.0 |
| Symantec Antivirus 10.0.1.394, 10.1.5000, 11.0.6100.645 |
| BitDefender 11.0.19 |
| VirusBuster Professional 6.3 |
| NOD32 Antivirus 4.0.437.0 |
| Avira 8.1, 9.1 |

Avira personal

1.4. Features eliminated from the previous version

1.4.1. Elimination of obsolete platforms

AdminSecure 4.50 will only support the following platforms:

- Windows workstations (2000, XP, Vista and 7)
- Windows servers (2000, 2003, 2003 R2, 2008 and 2008 R2)
- Exchange servers (2000, 2003, 2007 and 2010)
- Domino servers
- ISA servers

Consequently, the following platforms cannot be administered from the console:

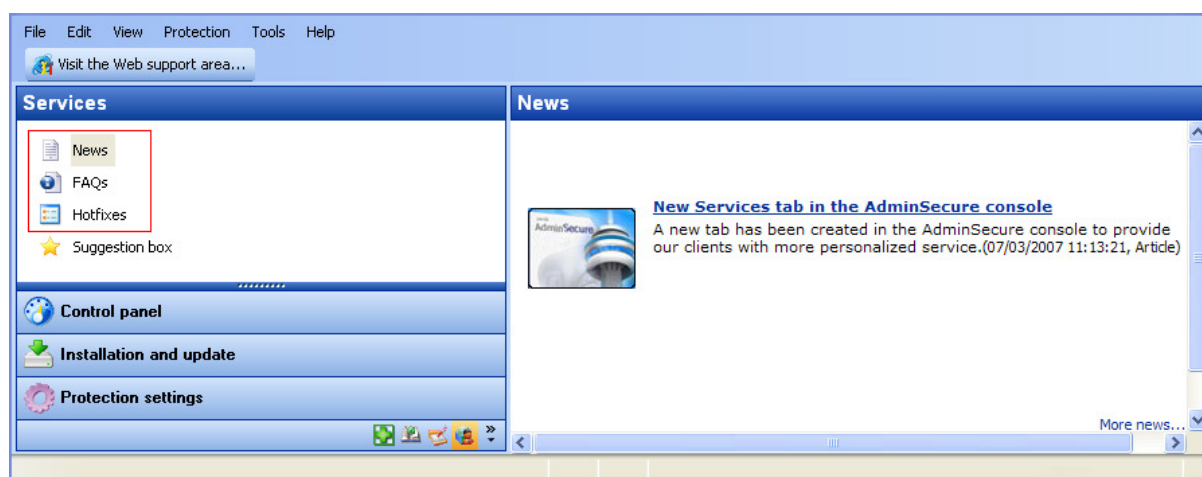
- CVP servers
- Linux mail servers
- Netware servers
- Proxy servers
- Exchange 5.5 servers
- Windows 9x and NT workstations
- Windows NT4 servers

1.4.2. Elimination of the distribution across Novell networks

With AdminSecure 4.50 it is no longer possible to distribute the agent and the protection across Novell networks.

1.4.3. Elimination of the communication channel with clients from the console

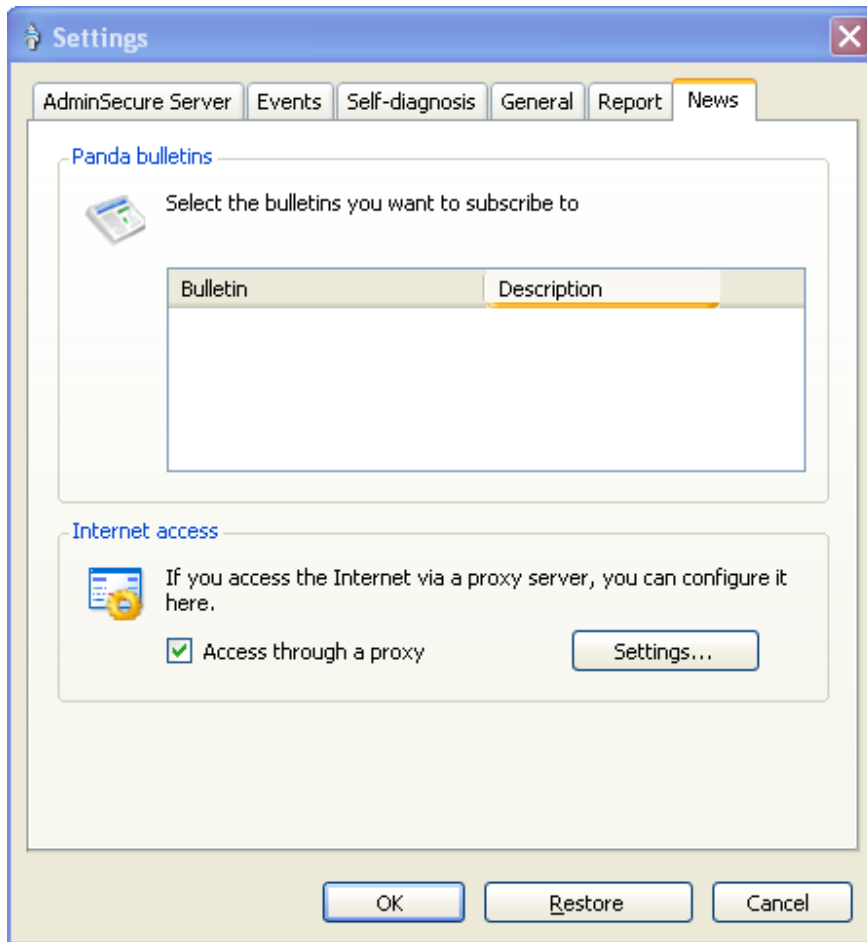
At present, the Services tab in the AdminSecure Console includes options with information about FAQs, News and Hotfixes:



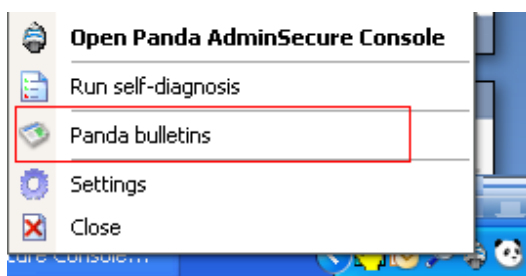
These options have been eliminated in AdminSecure 4.50 and replaced with a new feature described in section 1.4.6 of this document.

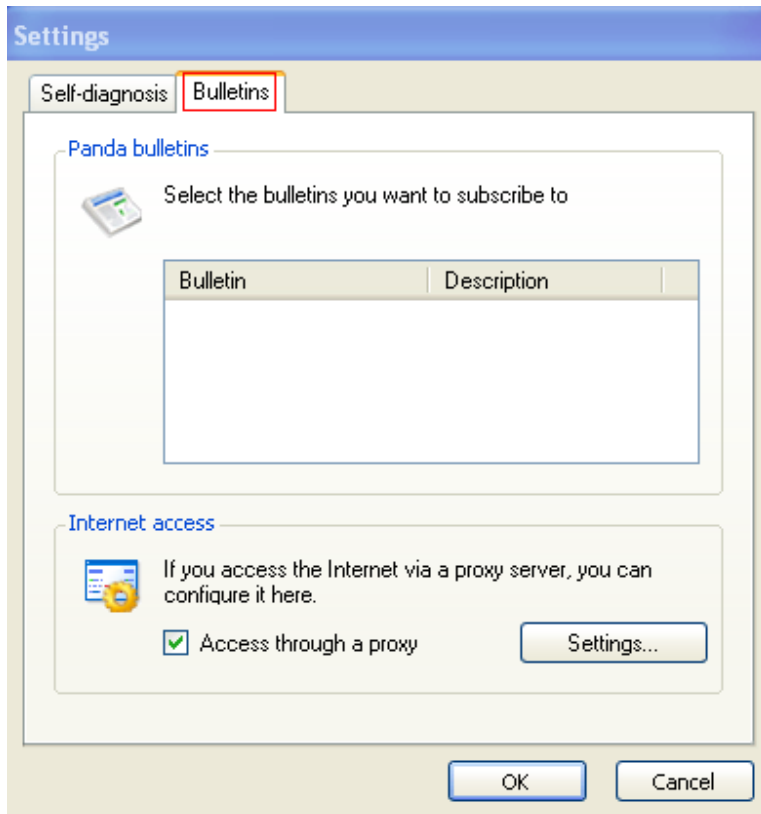
There was also an option for users to subscribe to various Panda news channels. News items were displayed by the Console in the form of pop-up messages whose content was defined by the Support Area.

However, this feature has been hardly used for several reasons. Therefore, the "News" tab in Tools/Options has been eliminated from the Console.



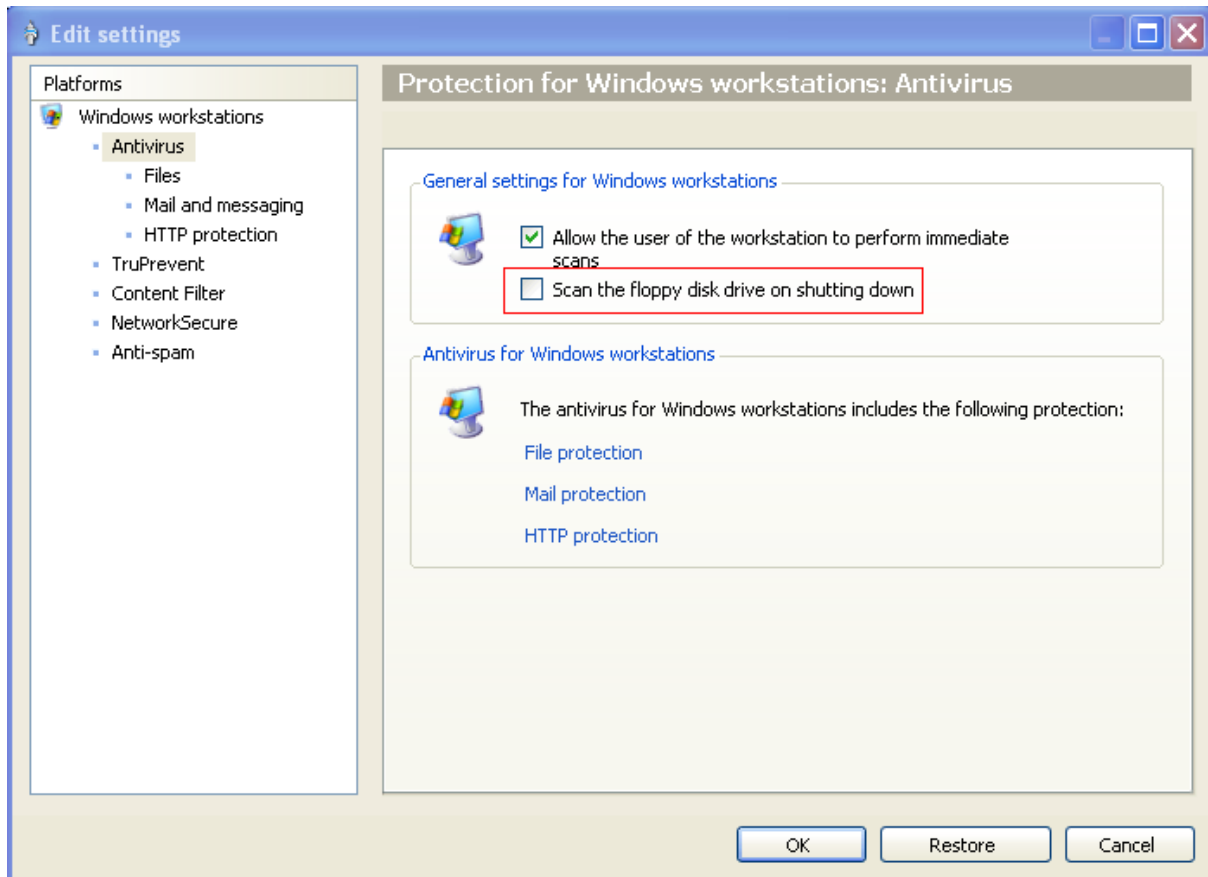
The "Panda News" option accessible from the AdminSecure icon in the SysTray has also been eliminated. Additionally, the "News" tab accessible from the "Settings" option in the same menu has also been removed.





1.4.4. Elimination of the option to scan floppy disk drives

At present, the AdminSecure console includes an option in the antivirus module of the Windows workstation protection to scan floppy disk drives on shutting down the computer:



This option has been eliminated from AdminSecure 4.50 as new computers do not include floppy disk drives.

1.4.5. Elimination of the AdminSecure SDK

The AdminSecure SDK is a tool that lets users manage the protection and accompanies the agent.

However, this tool was not useful enough didn't add much value and increased maintenance costs, so it has been eliminated from AdminSecure 4.50.

1.5. Bugs corrected

AdminSecure 4.50 fixes the following bugs detected in previous versions of the program:

- Under certain update conditions, Windows 2000 Pro computers restarted on saving Office documents to UNC paths.
- Pending tasks were not relaunched after restarting the computer that generated them
- Sometimes, if the PATH environment variable contained UNC paths the agent service did not start.
- Some SNMP servers displayed errors on receiving SNMP v2c events.
- Incremental upgrades of the protection modules failed due to an agent problem.
- Memory overflow launching the upgrade on a computer with a captive portal
- If you installed the agent on a Windows 2008 Server, several duplicate rules were created in the Windows firewall to exclude pagent.exe.
- Windows 7 computers did not report logged users.
- Blue screen error installing the shield by the agent on HP Proliant G6 computers.
- Error scheduling a report sending task using an additional AdminServer.
- The "Update now" pop-up message was displayed to users without the necessary privileges.
- Error clicking the "Update" button on networks with several computers.
- Loss of messages during the reintegration process on networks with several computers.
- AdminSecure detected 2008 x64 servers with Exchange 2010 and Edge role but didn't show them in the console.
- Messages warning that the proxy authentication data was incorrect were displayed on Windows Vista computers outside the network.
- A problem with the German date format when updating repositories could leave repositories disabled.
- Certain actions on the console could prevent detailed information on tasks, scans and events from being displayed.
- AdminSecure upgrades failed if the previous version was installed on another drive.
- The signature file report could contain duplicate computers, one of which appearing as 'outdated'.
- Protection modules were not updated on computers outside the corporate network.
- On computers using AM/PM times, tasks scheduled for 12:00 PM could be launched at 12:00 AM
- After installing AdminSecure 4.05, the console didn't display the protection installed on some computers.
- If you selected two canceled jobs in the Console and eliminated them you couldn't double-click the rest of events.

- Problem displaying the current date of malware signature files in the console on computers with a Russian operating system.
- High CPU usage in AdminServer with a customer's database.
- Problems integrating computers on AdminSecure. It took too long to integrate them in the IT network.
- The Windows 7 protection didn't install automatically.
- Error clicking the "Update" button on networks with several computers.
- Problems integrating the agent.
- The installed Exchange 2010 protection was not displayed in the console.
- Automatic upgrades did not work.
- Usernames and domains of logged users were not correctly displayed on Windows 7 clients.
- Log events displayed incorrect words in Chinese.
- Usernames and domains were incorrectly displayed on Windows 7 clients.
- Computers where configuration changes were still to be made since they had been shut down appeared in the console with the status "The communications agent has been uninstalled" after running the computer search process (Agscan).
- AdminSecure did not show the properties of disinfected files.
- The rules to integrate computers using Active Directory did not work correctly.
- The "Update and Connection Status" report showed duplicate computer names.
- Information regarding the number of integrated computers is not correct because it is not able to admit more than 4 characters or 9999 computers.

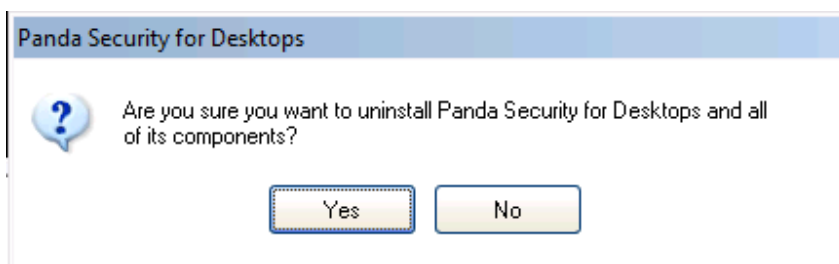
2. PANDA FOR DESKTOPS (2000/XP/VISTA/WIN7)

2.1. New features of the version

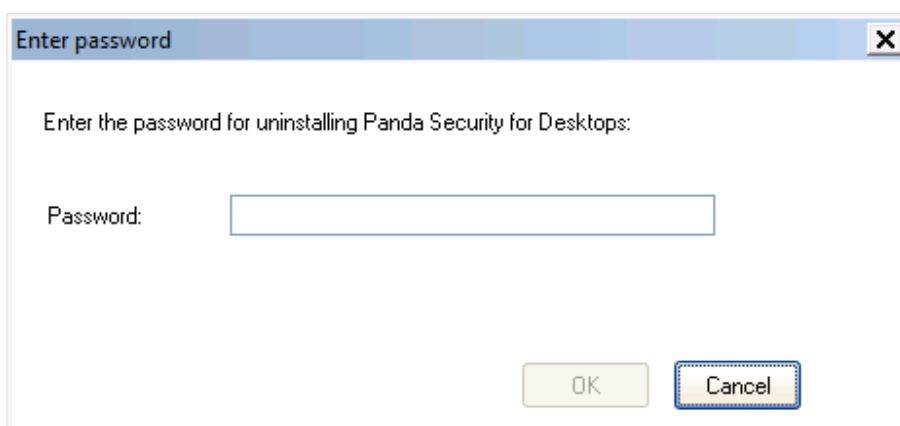
2.1.1. Password-protected uninstall of the protection

Panda for Desktops includes the following features:

- If the user tries to uninstall the protection using the Add or Remove Program options in the Windows Control Panel, they will be asked for confirmation to do it.



- If they select Yes and an uninstall password exists they will be asked to enter it.



2.1.2. Elimination of the anti-spam buttons in Outlook

If the anti-spam protection included in Panda for Desktops 4.50.00 is not enabled, the **Classify as SPAM** and **Classify as not SPAM** buttons in the Outlook taskbar won't be displayed:



2.2. Bugs corrected

- Certain files could not be sent to quarantine.
- Scheduled scans did not work properly.
- An error message was displayed when you started Outlook and the pavplugin process was active.
- The Content Filter module did not scan files with a double extension.
- BSOD after applying MS patch KB2393802.

3. PANDA FOR FILESERVERS (2000/2003/2008/2008 R2)

3.1. Bugs corrected

Panda for File Servers fixes the following bugs detected in previous versions of the program:

- Scheduled scans did not work properly.
- A blue error screen occurred creating an ISO image.

4. PANDA FOR EXCHANGE SERVERS (2000/2003)

4.1. Bugs corrected

Panda for Exchange Servers (2000/2003) fixes the following bugs detected in previous versions of the program:

- Panda for Exchange did not work correctly after installation.

5. PANDA FOR EXCHANGE SERVERS (2010)

5.1. New features of the version

5.1.1. Compatibility with Exchange 2010 SP1

Panda for Exchange Servers (2010) is compatible with Exchange 2010 SP1.

6. ANNEX I: Versions table

6.1. Panda for Business 4.50.00

| MODULE | VERSION |
|--------|---------|
|--------|---------|

| | |
|--|---------|
| AdminSecure | 4.50.00 |
| Panda for Desktops (2000/XP/Vista/Win7) | 4.50.00 |
| Panda for File Servers (2000/2003/2008) | 8.50.00 |

6.2. Panda for Business with Exchange 4.50.00

| MODULE | VERSION |
|--|----------------|
| AdminSecure | 4.50.00 |
| Panda for Desktops (2000/XP/Vista/Win7) | 4.50.00 |
| Panda for File Servers (2000/2003/2008) | 8.50.00 |
| Panda for Exchange Servers (2000/2003) | 3.20.06 |

6.3. Panda for Enterprise 4.50.00

| MODULE | VERSION |
|--|----------------|
| AdminSecure | 4.50.00 |
| Panda for Desktops (2000/XP/Vista/Win7) | 4.50.00 |
| Panda for File Servers (2000/2003/2008) | 8.50.00 |
| Panda for Exchange Servers (2000/2003) | 3.20.06 |